



50 Broadway, Suite 1205.  
New York, NY 10004  
Tel 212-221-0057, Fax 917-534-6069  
[www.r-tele.com](http://www.r-tele.com)

## Configuring Test Line

Clients are encouraged to create a test account for manual testing of outbound routes. This document outlines suggested procedure to establish a test account.

### 1. Prepare VoIP testing device

Any VoIP origination device will work: softphones, smartphone SIP client applications, H.323 or SIP phone adapter, IP PBX.

For a free PC softphone we recommend Zoiper that can be downloaded for free:

[http://www.zoiper.com/download\\_list.php?os=All](http://www.zoiper.com/download_list.php?os=All)

Zoiper supports Windows, Linux and MacOS.

We recommend Zoiper as it handles NAT and has built-in FAX capability.

### 2. Identify your IP address

Most of DSL/Cable providers don't assign static IP but keep it same for long periods of time. To find out your public IP address check [www.myipaddress.com](http://www.myipaddress.com)

**If your IP changes just repeat steps 2 and 4.**

### 3. Configure your Sonus system

Place provisioning order as usual. Test line will be treated as any other Member in your system.

## 4. Configure VoIP test line

Configure destination IP address (your system SIP address)

Disable phone Registration

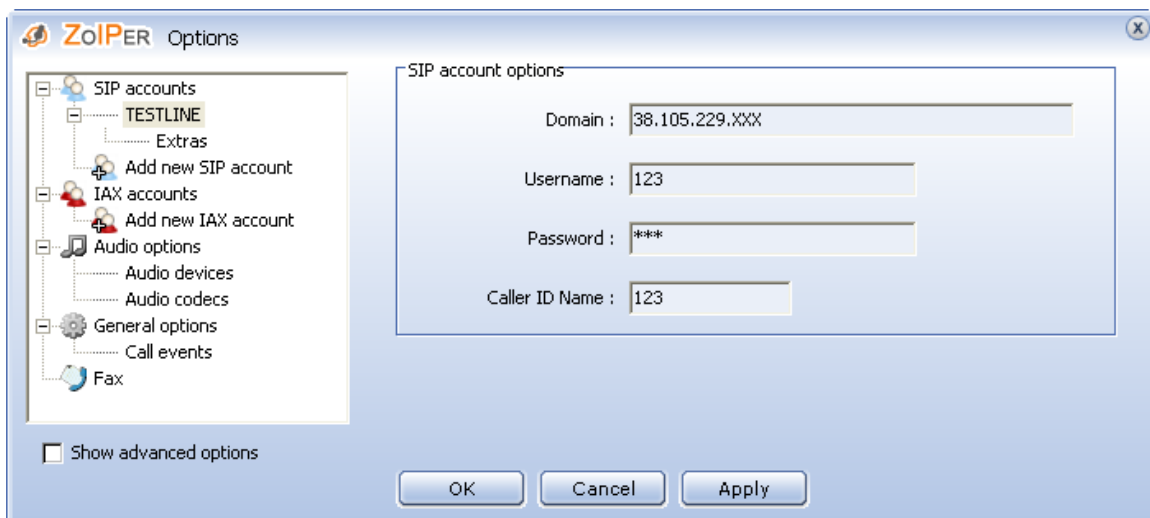
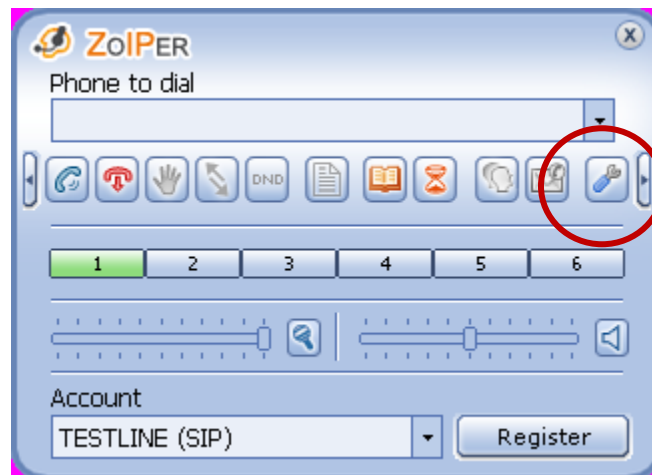
Use any username/password as authentication is based on IP

Make sure to use UDP for SIP phones

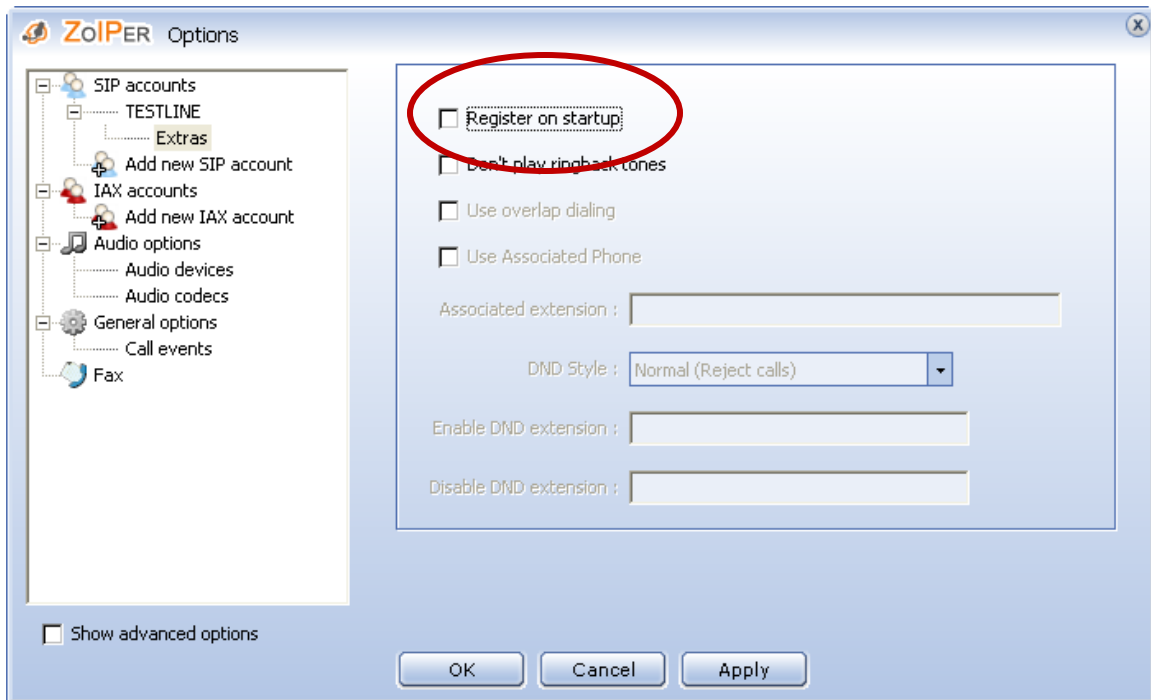
Select G711, G729 or G723 codecs

Note: User name & password call authentication is disabled as such method assumes that firewall allows any IP address to access your system, which is dangerous.

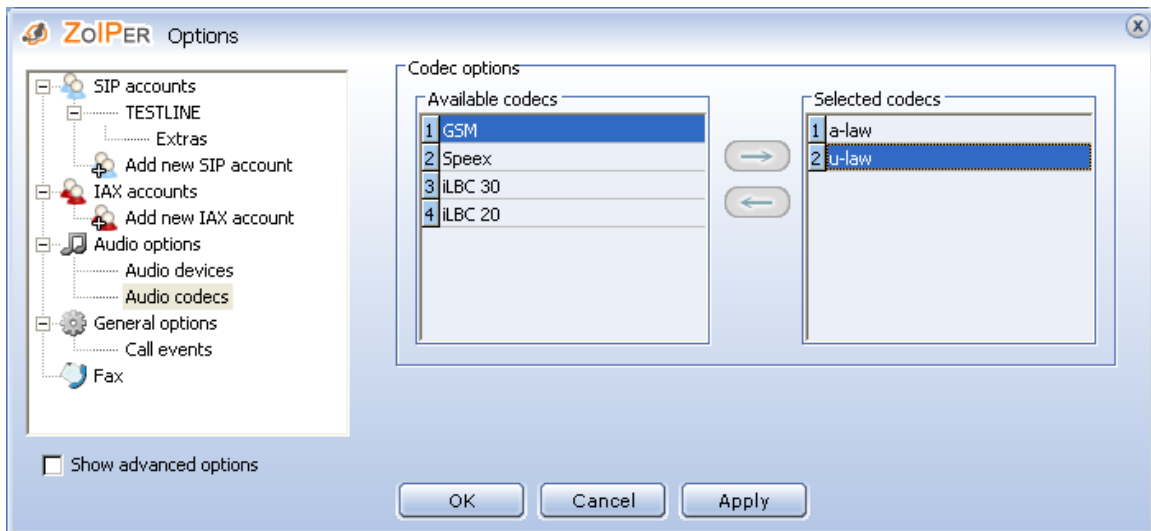
### Example: Zoiper configuration



Disable registration under Extras menu:



Select G711 u-law and/or a-law as selected codecs.



You're done!

You can start placing test calls, test DTMF and faxes.

## Example 2: X-Lite and EyeBeam configuration

The screenshot shows the 'Properties of Account 1' dialog box with the 'Domain Proxy' section highlighted. The 'Register with domain and receive incoming calls' checkbox is checked and circled in red. The 'Send outbound via' section has 'domain' selected. The 'Dialing plan' field contains the text: #1\a\a.T;match=1;prestrip=2;

Field	Value
Display Name	anything
User name	anything
Password	••••
Authorization user name	anything
Domain	38.105.229.xxx
Register with domain and receive incoming calls	<input checked="" type="checkbox"/>
Send outbound via	<input checked="" type="radio"/> domain
proxy Address	
Dialing plan	#1\a\a.T;match=1;prestrip=2;

## EyeBeam (paid version of X-lite) SIP protocol settings:

The screenshot shows the 'Properties of Account 5' dialog box with the 'Security' section highlighted. The 'Signalling Transport' dropdown menu is set to 'UDP' and is circled in red. The 'Media Encryption' section has 'Do not allow encrypted calls' selected.

Field	Value
Signalling Transport	UDP
Encrypted or TLS must be selected to enable media encryption.	
Media Encryption	<input checked="" type="radio"/> Do not allow encrypted calls

## Recommended voice codec options

